



## Message from Headteacher

### **A huge thank you!**

Thank you to everyone who has helped in the preparations for the Autumn Fair. Members of the Parent Teacher Association have worked hard to organise this event. Thank you to staff who have contributed, particularly Ms Newton, our School Business Manager, and to all of the volunteers who are manning stalls. Our wonderful kitchen staff are giving up their time to cater for this event and I am so grateful for their generous support of our school. We hope that the event will be a huge success. I look forward to updating you next week on how much has been raised – every penny will be spent on enriching our school and the opportunities we can offer to our pupils.

### **Academy Conversion**

Parents and carers are aware that the school is converting to academy status. You will know that we are one of the founding schools of a new academy trust, Chester Diocesan Learning Trust, being set up by the Diocese of Chester.

We are currently looking to convert on 1st November 2025. This may change but I will keep families posted over coming weeks.

### **Parents' Evening**

We wrote to families last week about the booking process for Parents' Evening meetings that will take place the week beginning 20th October.

Please contact the school office if you are experiencing difficulties booking a meeting with your child's teacher.

We look forward to welcoming you to the school to talk about your child's progress.

### **Parent & Carer Questionnaires**

Our Parent and Carer questionnaires are now live and available on school Spider.

Please note that there are two versions of the questionnaire – one is for parents/carers of children who have recently joined us in September in Reception and in other year groups. The closing date for completed questionnaires is Friday 3rd October.

Please take the time to give your views to help us to evaluate the work of our school.

# Message from Headteacher

## Reception 2026

It is the time of year when we begin welcoming prospective parents looking for Reception school places to our school. We have been inundated with requests to come and visit our school. Please encourage any families you know who are considering Hoole for a Reception place in September 2026 to book onto a tour as soon as possible to avoid disappointment.

We have two open evenings and several group tours running over coming months. Dates are shown on the flyer within this newsletter.

Thank you for promoting our school in the local community.

## Parent/Carer Workshop

We have our first parent/carers workshop of the year coming up. Reception parents and carers are welcomed to join us on Tuesday 30<sup>th</sup> September from 4.30pm to 5.15pm for an information session about how we teach children to read at Hoole.

Parents/carers will learn more about the Little Wandle phonics scheme we use and ways in which they can support their child at home.

Parents/carers of children in Reception can sign up for the workshop on School Spider – all are welcome to attend.

Over this academic year, as usual, we have a full programme of Parent/Carer workshops and information sessions to ensure that we are able to work in partnership with you. Watch this space!

## School Bank

It was great to see our school bank back in business on Thursday.

The bank team welcomed new and existing savers in to invest their pocket money. We are proud to have been the first school in our area to offer a bank to promote positive financial literacy from a young age.



The school bank runs in collaboration with the West Cheshire Credit Union. Accounts are paid a competitive rate of interest and all pupils are eligible to open an account.

Please see the application form included in this week's newsletter for more information.

## Mornings

I respectfully request that children remain with their parents or carers in the mornings before the school gates open rather than playing on the grass.

Please also ensure that your child comes off their bike or scooter when they come through the school gates as it is very busy. Children should also walk with their bikes and scooters to the gate, rather than riding on them, at the end of the day.

# Message from Headteacher

## Clubs

We have had an exciting week with after school clubs starting up again this week. A huge thank you again to all of the staff who give up their time so generously to offer such a range of opportunities for our pupils.

This term, we have an array of sports clubs (football for boys, girls and all ages, netball, dodgeball, streetdance) as well as arts clubs, Beacon Club run by our friends from All Saints Church, and Lego clubs for budding designers. We even have a club combining art and stories for our younger children!

Coming soon, we have a very new development linked to our **Why Don't You..?** campaign, which is designed to promote children putting aside their devices, electronic games and I-pads to do something more interesting instead.

We don't want to spend our time watching silly endless videos when we have genius plans to bring to life! This week alone, we have seen cardboard boxes turned into aquariums and robots as a result of a genius plan, some hard work, enthusiasm and perseverance.



Ren & Bob, the Robot she made!



Alice & her aquarium, inspired by Leia's show & tell!

## All Saints' Church News

Our friends at All Saints' Church are holding a Halloween Party with a difference on Saturday 1<sup>st</sup> November! The event is completely free and will involve lots of fun activities, games and tasty refreshments. If your child would like to attend, please ensure you sign up quickly via the QR code as places are limited!

A vibrant poster for a Halloween party. The background is a colorful burst of light rays in shades of blue, purple, and pink. At the top, the text 'as all saints hoole' is written in a white, lowercase, sans-serif font. Below this, the words 'LIGHT PARTY' are written in large, bold, yellow capital letters. A yellow banner across the middle contains the text 'Free Alternative Halloween Party for Primary School Children' in purple. Below the banner, the date and time 'SAT, 1<sup>ST</sup> NOV 5-7PM' and the location 'ALL SAINTS CHURCH CENTRE' are written in purple. A yellow arrow points to the right with the text 'Scan the qr code to sign up'. A QR code is located on the right side of the poster. In the bottom left corner, a yellow speech bubble contains the text 'fun activities games pizza sweets'. At the bottom, a white banner contains the text 'I am the light of the world - John 8:12' in purple.



# Early Help Navigator

Our school Early Help Navigator is called Donna.

The role of Early Help Navigators is to:

- Help you to navigate what support is available locally;
- Offer help, support and advice;
- Be a listening ear;
- Help with completion of forms;
- Signpost families to local and national services.

Look out for Donna outside the front of school on the first Thursday of every month (next date: 2<sup>nd</sup> October).



## Ambitions



"When I'm older, I'm going to be a Policeman because I like helping people."

Archer, Year 2

"I would like run a toy factory when I grow up. I'm very creative and I would make toys to give to charity."

Milo, Year 2





# Year 6 Residential Trip





# Year 6 Residential Trip





# Worship

This week's class based worship was based on the news that the Guinness World Records book is celebrating its 70th anniversary. We learnt about some of the unusual records - like the fastest time to blow a stamp 10 metres or the most high fives in 30 seconds.

We looked at the protected characteristic of age as we considered that to achieve a goal, we need to not give up, but to persevere and we talked about the feeling of accomplishment when we achieve a goal. We also talked about the fact that we can never be too old to set another goal.

Our Bible verses came from James 1:12

Blessed is the one who perseveres under trial because, having stood the test, that person will receive the crown of life that the Lord has promised to those who love Him.

Questions you might ask your child:

How do you feel when you try something hard?

How can you help yourself when something is difficult? Is asking for help a way of giving up?

How can mistakes be good?

When something is challenging, what helps you keep trying?

Is it easier to keep on going when you have someone cheering you on?

In our whole school worship on Friday, we reflected on Ross Edgely's 1000 mile swim around Iceland and the importance of his support network - not only the practical support but the encouragement from people along the way.

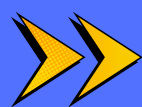


## Friday Assembly

Parents and carers are invited to Friday Assembly when their child's class is presenting. Please arrive at 2.25pm for a 2.30pm start. If you are able to join us, please refrain from parking in the visitors car park as the gates will close during the assembly.

Date	Class
3rd October	Team 6B
10th October	Team 5R
17th October	Team 4JK
7th November	Team 3U
14th November	Team 2C





# Parents' Evenings

Our Autumn Term Parent's Evenings will take place before we break up for half-term. During these meetings, your child's class teacher will discuss their latest Individual Learning Plan with you, as well as how they have settled into the school year.

Parents Evening slots can be booked through our website, [www.hooleceprimary.co.uk](http://www.hooleceprimary.co.uk) or the School Spider App. Parents and Carers will need to login to the school website or the app to be able to book a slot. If you have forgotten your login details, please click on the "forgotten password" link to reset it.

The slots are available on a first come first served basis. We emailed step-by-step instructions of how to book a slot to all parents and carers earlier this week.

If you would prefer a telephone consultation at the time you have booked, please make contact with the School Office via email to [admin@hooleceprimary.cheshire.sch.uk](mailto:admin@hooleceprimary.cheshire.sch.uk), so we can check contact details and update records where needed.

Unless we hear from families, we will assume that parents or carers are attending in person.

Year group	Class teacher	Date of Parents' Evenings
Reception	Mrs Walsh – Team RW	Tuesday 21 <sup>st</sup> October Wednesday 22 <sup>nd</sup> October
	Miss Mcdonald – Team RM	Tuesday 21 <sup>st</sup> October Wednesday 22 <sup>nd</sup> October
Year 1	Mrs Jeffs – Team 1J	Monday 20 <sup>th</sup> October Tuesday 21 <sup>st</sup> October
	Miss Hildebrandt – Team 1H	Monday 20 <sup>th</sup> October Tuesday 21 <sup>st</sup> October
Year 2	Miss Carter – Team 2C	Monday 20 <sup>th</sup> October Tuesday 21 <sup>st</sup> October
	Mrs King – Team 2K	Tuesday 21 <sup>st</sup> October Wednesday 22 <sup>nd</sup> October
Year 3	Mrs Elston and Mrs Inns – Team 3EI	Monday 20 <sup>th</sup> October Thursday 23 <sup>rd</sup> October
	Mr Underhill – Team 3U	Monday 20 <sup>th</sup> October Tuesday 21 <sup>st</sup> October
Year 4	Mrs Kelly and Mrs Jones – Team 4JK	Wednesday 22 <sup>nd</sup> October Thursday 23 <sup>rd</sup> October
	Miss Cotgreave – Team 4C	Monday 20 <sup>th</sup> October Tuesday 21 <sup>st</sup> October
Year 5	Mrs Salisbury – Team 5S	Monday 20 <sup>th</sup> October Tuesday 21 <sup>st</sup> October
	Miss Rennocks – Team 5R	Monday 20 <sup>th</sup> October Tuesday 21 <sup>st</sup> October
Year 6	Mrs Millington – Team 6M	Monday 20 <sup>th</sup> October Tuesday 21 <sup>st</sup> October
	Miss Buckley – Team 6B	Monday 20 <sup>th</sup> October Tuesday 21 <sup>st</sup> October

# Uniform Union



**KIT YOUR CHILD OUT FOR THE AUTUMN AND WINTER SEASON FOR FREE WITH A TRIP TO THE CHILDREN'S UNIFORM UNION! THERE'S BRANDED UNIFORM AND PE KITS GALORE!**

Our Uniform Union is the blue building just outside the School Office at the front of school, next to the Story Shack!

The cabin contains pre-loved uniform, PE kit and footwear for children of all ages. All items are clean and in good condition. There is a wide selection of ready to wear clothing and footwear in a range of sizes. There is **no charge** for any items.

The Uniform Union is open every school day from 8am to 4.30pm.

We sustain our Uniform Union by collecting pre-loved uniform, PE kits or footwear from our families so that this facility remains well-stocked. Providing this service also enables us to promote a positive message about sustainability, recycling and reusing items to our school family.

## WHAT OUR FAMILIES THINK!

"The Uniform Union has been great for us, with a child who has sensory sensitivities. I have been able to try different types of uniform to see if she is happy with them before going out and buying anything."

"I think the Uniform Union is an invaluable facility and what a brilliant way to tackle both environmental issues and the cost of living crisis. I use it for school clothing and feel really good about reusing these clothes. Just amazing."

"No uniform goes to waste. It's a very helpful resource."

"Absolutely amazing idea. Saving a lot of money on uniforms and most importantly, recycling."



# Cheshire Phoenix Season Ticket

We have been very kindly gifted a school season ticket for Cheshire Phoenix Basketball matches.



We have been very kindly gifted a school season ticket for Cheshire Phoenix Basketball matches!

If you would like to loan the ticket to get admission free for your family into one the Phoenix home matches at the Ellesmere Port Sports Village, please contact the School Office to check for any dates the ticket has available for this season.

## CHESHIRE PHOENIX HOME SCHEDULE 2025/26

SEPTEMBER	JANUARY
SUN 28 <b>BOOKED</b> ONIA GLADIATORS . 5.30PM	SUN 11 . vs NEWCASTLE EAGLES . 5.30PM
	SUN 18 . vs SURREY 89ERS . 5.30PM
OCTOBER	FEBRUARY
SUN 12 <b>BOOKED</b> ELD SHARKS . 5.30PM	FRI 06 . vs MANCHESTER BASKETBALL . 7.30PM
SUN 19 <b>BOOKED</b> ASTLE EAGLES . 5.30PM	SUN 22 . vs SURREY 89ERS . 5.30PM
SUN 26 <b>BOOKED</b> ELD SHARKS . 5.30PM	
NOVEMBER	MARCH
SUN 16 <b>BOOKED</b> ON LIONS . 5.30PM	SUN 29 . vs BRISTOL FLYERS . 5.30PM
SUN 23 . vs BRISTOL FLYERS . 5.30PM	
DECEMBER	APRIL
SUN 07 <b>BOOKED</b> TER RIDERS . 5.30PM	SUN 05 . vs LONDON LIONS . 5.30PM
SUN 28 . vs MANCHESTER BASKETBALL . 5.30PM	SUN 19 . vs CALEDONIA GLADIATORS . 5.30PM
	SUN 26 . vs LEICESTER RIDERS . 5.30PM

\*Fixtures subject to change

ALL GAMES PLAYED AT ELLESMERE PORT SPORTS VILLAGE



## Times Tables Rockstar Championship



### THE TT ROCKSTARS BATTLE EXPLAINED!

Each week there is a fierce battle between all our junior classes (Years 3-6)! Battles commences at 3:30pm each Thursday and end at 9:30am on the following Tuesday.

Pupils and classes that are victorious are presented with certificates in assembly each Friday.

The children in the winning classes are awarded 10 minutes extra play that week, so get practicing!!







# RECEPTION PHONICS WORKSHOP



TUESDAY  
30<sup>TH</sup> SEPTEMBER  
4.30PM - 5.15PM

Join us to learn all about the Little Wandle, the phonics programme that we use in Reception to support your child with learning sounds and reading!

During the workshop, parents and carers will gain an overview of Little Wandle and learn some techniques to support your child with their reading and phonics at home.

Book your place on School Spider today!



# SPORTS NEWS



## HOCKEY TOURNAMENT

On Wednesday, our Year 6 Hockey Team played an absolute blinder at a Hockey Tournament, winning 4 games and drawing 1, taking us through to the semi-finals where we beat Cherry Grove, 3-0! It was a tense final against Saughall, drawing 0-0 at the final whistle. It went to a Golden Goal penalty, with Thea grabbing the victory and taking us through to the Cheshire County final!

Well done to our amazing champions, Niall, George, Lexi, Elin and Thea!



## Why Don't You...

Autumn is too fun to sit indoors playing video games, scrolling through your phone or watching TV! Let us know what your doing instead for fun by sending a photo to [lizfoy@hooleceprimary.cheshire.sch.uk](mailto:lizfoy@hooleceprimary.cheshire.sch.uk) and be featured in our weekly newsletter!







# Junior Saver Application Form

First Name

Surname

Date of Birth

I am under 16 years of age and apply to become a Junior Saver of the West Cheshire Credit Union. I promise that I shall abide by the rules of the credit union. I have no objections to my details being held on the West Cheshire Credit Union computer database in accordance with GDPR. I understand that my details shall be kept confidential and not passed to any other organisations.

Home Address

Post Code

Signed:

Date:

*If the applicant is too young to sign, a responsible adult / guardian should sign on their behalf and the relationship with the applicant noted below.*

**This section is to be completed by the responsible adult with authority to open an account on behalf of the junior applicant**

- I hereby authorise a junior saver account to be opened in the above name
- I request that the West Cheshire Credit Union hold an authorised signature from myself to authorise all withdrawals until the applicant reaches the age of 16.

I ask that my instructions remain in force until they are changed in writing from myself, or the applicant reaches the age of 16.

I fully understand that when the applicant reaches the age of 16 the account will be converted to an adult membership at which time I shall thereafter hold no authority to operate or control the account.

Full Name (Please Print)

Address

Post Code

Date of Birth

Relationship to Applicant

Mobile Number

Email:

Signed.....

Date.....

**In order to comply with Anti Money Laundering Regulations we need to confirm the identity of both the applicant and the responsible adult. You will need to provide the following**

## Junior Applicant

1. Birth certificate or Passport

## Responsible Adult

1. Passport / Driving Licence/Birth Certificate  
2. Bank / Utility Bill

Office Use Only

Date Received:

AML Check Complete:

Member Number Issued

Welcome Pack Sent



# Harvest COLLECTION

FOR CHESTER FOODBANK

ANY DONATIONS MADE TO THE SCHOOL WILL BE USED TO HELP LOCAL FAMILIES IN NEED.



WE WELCOME DONATIONS OF:

UHT juice  
Custard  
Tinned vegetables  
Jams and spreads  
Tinned meats  
Tinned fish

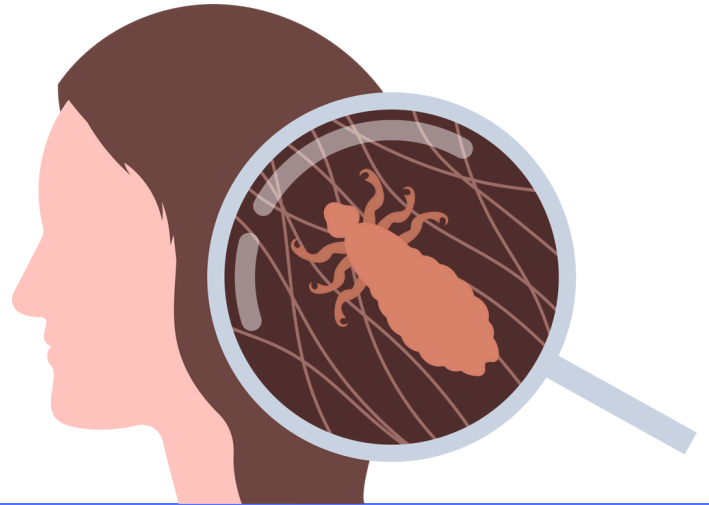
Instant coffee  
Cuppa soups  
Instant noodles  
Instant pasta and sauce  
Tinned fruit  
Biscuits

# Stop the Spread!

We are currently experiencing cases of head lice in school.

Head Lice is a continual problem in schools and we ask parents and carers to check your child's hair regularly for lice, and if found, treat them accordingly.

- ☒ regularly check your children's hair
- ☒ teach older children to check their own hair
- ☒ tie back and braid long hair
- ☒ keep a fine tooth head lice comb in the bathroom and encourage all family members to use it when they wash their hair



## Birthdays

**SOPHIA, SEREN,  
REBECA, PAIGE,  
IRINA, AADYA,  
FREDERICK,  
ARCHER, MAYA,  
MELISSA, THEA,  
MILO & EVA!**

*Many happy returns  
to all our birthday  
buddies!*

*We hope you enjoy  
your birthday book!*



# Parentalk

Care for the Family

## THE PRIMARY YEARS

www.careforthefamily.co.uk

**A GREAT COURSE THAT COVERS THE ESSENTIAL TOPICS FOR PARENTS OF CHILDREN IN THE PRIMARY YEARS!**

4PM-5PM IN SCHOOL WITH MRS BOWES (HETTY), MRS CHESTER (HETTY), MRS JEFFS AND MRS COOPER

TUES 14TH OCT  
TUES 25TH NOV  
TUES 27TH JAN  
TUES 24TH MARCH  
TUES 12TH MAY  
TUES 7TH JULY

THE BUSYNESS OF FAMILY LIFE  
UNDERSTANDING CHILDREN'S 'LOVE LANGUAGES' COMMUNICATION  
SETTING BOUNDARIES  
PREPARING CHILDREN FOR THE OUTSIDE WORLD  
THE IMPORTANCE OF FAMILY TIME

Let Your Light Shine - Matthew 5:16 (Sermon on the Mount)  
Ambition for all to enjoy life in all its fullness



PLEASE EMAIL  
ADMIN@HOOLECEPRIMARY.  
CHESHIRE.SCH.UK TO  
RESERVE YOUR  
PLACE!

During the Parenttalk sessions, parents and carers have the opportunity to discuss and reflect on positive strategies to manage behaviour at home. Sessions are facilitated by materials from Parentalk, including videos and resources which offer quality guidance and support. This is a very supportive, non-judgmental environment to help parents and carers to consider alternative perspectives and build a toolkit of approaches for managing behaviour at home. Reserve your place today by emailing the School Office!

## Punctuality & Attendance Crew

Our PAC this year are Oscar, Darcie, Alice, Norah, Sophie, Mollie, Maya, Oliver, Niall, Ire, Elsie and Evelyn!



Our Punctuality & Attendance Crew work with Ms Williamson, our Attendance Officer, to promote positive attendance and punctuality. PAC members are always busy!

Over recent terms they have planned and delivered assemblies about attendance and punctuality and organised competitions for our children. Suggestions from PAC members has enabled us to extend the range of rewards we offer to recognise and encourage positive attendance and punctuality.





# PUNCTUALITY MATTERS

We are keen to explore how we can offer more help to families where punctuality causes stress.

If you would like to discuss how school may support, please contact Mrs Williamson, our Attendance Officer, or Mrs Robertson, our Learning Mentor.

Some of the ways we can help include developing reward charts to support children's organisation in the morning and, for example, bedtime routines.



If your child has arrived after the gates have closed, please accompany them to the school office. If they arrive after 9am, we may ask the reason for them arriving late. Please do not be offended. Our rationale for asking is so that we can think about how we can develop our approaches in school to help children and their families.

## Punctuality Codes

We use two main codes to show punctuality. These are the U Code and the L Code.

The L Code is used when children arrive between 9-9.19am. This is shown as an L on the child's attendance record to show that they arrived after registers have closed. The L code does not reduce the child's overall percentage. When children arrive after 8.50am when gates are closed, they come into school via the main door by the office.

The U Code is used from 9.20am. The U code does affect the child's overall attendance percentage. The overall percentage is reduced by the U code which indicates that a child has arrived significantly after registers have closed.

In the same way that we track attendance on a daily, weekly and half termly basis, L and U codes are also reviewed to ensure that we are doing all we can to support children to attend on time.

## Medical Appointments

We appreciate that medical appointments are often issued with no flexibility on the time families are given. We understand that this is particularly the case where children have hospital or specialist appointments.

If your child has a medical or dental appointment, if they come into school beforehand, they are marked as present and then the parent/carers signs them out. This does not affect their overall attendance percentage.

Where a child has a medical appointment at, for example, 9.30am and does not come into school beforehand, the M Code is recorded. This means that the child's overall attendance is reduced.



For more information:

[www.hooleceprimary.co.uk/page/attendance-and-punctuality/45602](http://www.hooleceprimary.co.uk/page/attendance-and-punctuality/45602)

# LETTING THEIR LIGHT SHINE!



Rose was Dodgeballer of Week!

Charles and Eleanor competed in the Cheshire Duathlon the other weekend!

Rosie was awarded a trophy for some fine gymnastics. She has also been rehearsing a spectacular dance with her friend Melissa at their dance club!

Martha and Thea boy ran in the Chester Zoo 1 mile run last weekend!

Lawson plays for Waverton FC and not only was he made Man of the Match but he scored 2 goals!

## LET'S CELEBRATE

The following children received a class honour  
for letting their light shine this week!

Nancy F

Solomon B

Eli W

Niall B

Freya O-J

Isaiah C

Evelyn D

Ivy D

Rory G

Esmay A

Demir T

Gleb N

Lena Z

Casi N

Gabriel V

Harrison O

Anna L

Jacob M





# IS YOUR CHILD STARTING PRIMARY SCHOOL IN SEPTEMBER 2026?

## MEET OUR TEAM AT OUR OPEN DAYS!

WEDNESDAY  
8TH OCTOBER  
4PM

During the Open Evenings, you will see how learning is developed across subjects, discover how our curriculum is enriched by engaging resources and enjoy our extensive outdoor environment. You will meet our teaching and support team and find out about how we support children to shine brightly and achieve well!

WEDNESDAY  
12TH NOVEMBER  
4PM

**At Hoole Church of England Primary School,**  
learning is active, exciting and out of this world!

We are also hosting tours of the school for small groups of families on:

Wednesday 24th September 9.30-10.30am  
Tuesday 14th October 9.30-10.30am  
Tuesday 21st October 9.30-10.30am  
Tuesday 4th November 9.30-10.30am  
Wednesday 5th November 9.30-10.30am  
Wednesday 19th November 9.30-10.30am  
Wednesday 3rd December 9.30-10.30am  
Thursday 8th January 9.30-10.30am & 1.30-2.30pm

Tours will be hosted by senior staff along with our Early Years and Key Stage One leader.

Please pre-book your tour by emailing us at  
[admin@hooleprimary.cheshire.sch.uk](mailto:admin@hooleprimary.cheshire.sch.uk) or calling us on 01244 323890



# Key Dates

30th September	Reception Parents Phonics Workshop 4.30pm
3rd October	Team 6B Assembly 2.30pm
20th-23rd October	Parents' Evenings
24th October	INSET Day (School closed to pupils)
27th-31st October	School Holidays
3rd November	School re-opens for pupils
5th November	Year 4 Trip
3rd-12th November	Year 6 Bikeability
12th November	Whole School Flu Vaccination
14th November	Children In Need
16th December	Y1-2 Christmas Service at All Saints' Church 1.45pm
17th December	Y3-4 Christmas Service at All Saints' Church 1.45pm
18th December	Y5-6 Christmas Service at All Saints' Church 1.45pm
20th December-4th January	School Holidays

## Contact us



01244 323890



[admin@hooleceprimary.cheshire.sch.uk](mailto:admin@hooleceprimary.cheshire.sch.uk)



[www.hooleceprimary.co.uk](http://www.hooleceprimary.co.uk)





# West Cheshire Athletic Club Schools Cross Country Race Series 2025/26

At Ellesmere Port Sports Village, Stanney Lane,  
Ellesmere Port,

Registration from 9.30am for school years 3 & 4  
And from 10am for school years 5-8.  
First Race Starts at 10am.

**Dates of Fixtures:**  
**Saturday, October 18**  
**Saturday, November 29**  
**Saturday, January 31**  
**Saturday, March 7**

Race Order for the following Girls and Boys year groups:  
Year Three, Year Four, Year Five, Year Six, Year Seven, Year Eight.

Medals will be presented to the first three finishers in each race.

The first three finishers from each school in each race will count as a team  
towards a team score based on their positions, and the team event will be  
held over four rounds.

Awards will also be presented to the top three finishers overall in each age  
group after four rounds.

Each pupil from each school will be provided with a race number which  
should be attached to the front of their T-shirt/vest.

Each participating school should provide  
a representative/parent/team manager at each round.  
Further details from Dennis Wall at West Cheshire AC.  
Tel: 07968 643038. Email: [dennis.wall1@ntlworld.com](mailto:dennis.wall1@ntlworld.com)



## Early Help Navigator Service

We know life isn't always easy – sometimes you don't know where to go for help, you might need a bit of advice or support, or simply a friendly face to talk to about something that's bothering you or your family.

**Early Help Navigators are here to help you.**

- Help you navigate what support is available
- Offer help, support and advice
- Be a listening ear
- Help you to complete forms
- Signpost you to local and national services

**Contact us:** Amber & Zuzana

**Email:** [Our Community Drop-ins](mailto:OurCommunityDrop-ins)

Monday: Hodge Community Centre 9-12  
Blacon Children's Centre 9-4pm

Tuesday Baby Buddies (Blacon Beacon) 10.15-11.45  
Blacon Library 10-11am

Tel: The Bread and Butter Thing, 12.30-1.30pm

Thursday: Blacon Beacon 10-1pm

Online: .....

**Or pop in to:**

Blacon Children's Centre, Chester,  
CH1 5DB **Monday 9-4pm**

Chester Victoria Children's Centre,  
Chester, CH1 4BR

Victoria Road Children's Centre,  
Northwich, CW9 5UT

Over Children's Centre, Winsford,  
CW7 1LX

Stanlaw Abbey Children's Centre,  
Ellesmere Port, CH65 9HE

Portside Children's Centre,  
Ellesmere Port, CH65 2BY

Visit: [www.startingwell.org.uk/centre-timetables](http://www.startingwell.org.uk/centre-timetables)

 Cheshire West  
and Chester



Please scan this QR code to book an appointment with  
Amber and Zuzana, the Chester Early Help Navigators

# STORYHOUSE

## Saturday 25 October – Sunday 2 November 2025



The WayWord Festival celebrates the power of words to ignite imaginations, go on an adventure and discover something new. There will be children's authors and illustrators live on stage, plenty of enchanting theatre performances for kids, workshops, storytelling, arts and crafts, and much much more!



# WayWord Festival



# PLAYER DEVELOPMENT CENTRE



Supporting players to reach their potential with quality coaching in a fun, development-focused environment.

AGES: u7's-u15's KING GEORGE V SPORTS HUB, BLACON, CH1 5BD

**FRI**  
17.00 - 20.00

**£5.00**  
PER SESSION  
Advanced booking essential

**BOOK NOW**  
[community.chesterfc.com/book](http://community.chesterfc.com/book)

ANNA.PRICE@CHESTERFC.COM  
KALVIN.WILLIAMS@CHESTERFC.COM  
01244 560580 | 07308 477055



# GIRLS PLAYER DEVELOPMENT CENTRE



Supporting players to reach their potential with quality coaching in a fun, development focused environment.

AGES: 10-14 KING GEORGE V SPORTS HUB, BLACON, CH1 5BD

**FRIDAYS**  
18.00 - 19.00

**£5.00**  
PER SESSION  
Advanced booking essential

**BOOK NOW**  
[community.chesterfc.com/book](http://community.chesterfc.com/book)

ANNA.PRICE@CHESTERFC.COM  
KALVIN.WILLIAMS@CHESTERFC.COM  
01244 560580 | 07308 477055



# PAN-DISABILITY FOOTBALL



Fun, inclusive football coaching for young people aged 7-15 with a sensory, learning or physical disability.

AGES: 7-15 GOALS SOCCER CENTRE, TALBOT WAY, CH1 4LT

**TUES**  
17.00 - 18.00

**£5.00**  
PER SESSION  
Advanced booking essential

**BOOK NOW**  
[community.chesterfc.com/book](http://community.chesterfc.com/book)

ANNA.PRICE@CHESTERFC.COM  
KALVIN.WILLIAMS@CHESTERFC.COM  
01244 560580 | 07308 477055



# GOALKEEPING ACADEMY



Specialist group coaching sessions for young goalkeepers of all abilities and experience levels.

AGES: 7-15 KING GEORGE V SPORTS HUB, BLACON, CH1 5BD

**WED**  
17.00 - 18.00

**£5.00**  
PER SESSION  
Advanced booking essential

**BOOK NOW**  
[community.chesterfc.com/book](http://community.chesterfc.com/book)

ANNA.PRICE@CHESTERFC.COM  
KALVIN.WILLIAMS@CHESTERFC.COM  
01244 560580 | 07308 477055



# BLACON YOUTH HUB



Make new friends and take part in activities, including sport, music, arts, movies, gaming and more, or just relax with your mates in a safe, inclusive space.

JUNIORS  
AGED: 7-11

SENIORS  
AGED: 12-17

**17.30 - 19.00**

**19.30 - 21.00**

**ANNUAL MEMBERSHIP £5**  
**£1 WEEKLY ENTRY**  
With membership card

KING GEORGE V SPORTS HUB, BLACON, CH1 5BD

**JOIN NOW** [community.chesterfc.com/blaconyouthhub](http://community.chesterfc.com/blaconyouthhub)

FOR MORE INFORMATION, EMAIL: [COMMUNITY@CHESTERFC.COM](mailto:COMMUNITY@CHESTERFC.COM)

# SKILLS CENTRE



Weekly coaching and small-sided games aimed at developing core skills including dribbling, passing, receiving, and finishing for young players of all levels.

AGES: 7-11 KING GEORGE V SPORTS HUB, BLACON, CH1 5BD

**WED**  
17.00 - 18.00  
Term time only

**£5.00**  
PER SESSION  
Advanced booking essential

**BOOK NOW**  
[community.chesterfc.com/book](http://community.chesterfc.com/book)

ANNA.PRICE@CHESTERFC.COM  
KALVIN.WILLIAMS@CHESTERFC.COM  
01244 560580 | 07308 477055

