

# 5th January Newsletter



01244 323890



admin@hooleprimary.cheshire.sch.uk



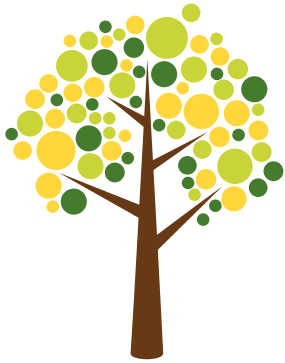
www.hooleprimary.co.uk



@hoolecofe



@hooleprimary



## Welcome back to school!

Let Your Light Shine  
Matthew 5:16 Sermon on the Mount

### Message from Headteacher

Happy New Year! It has been great to welcome everyone back to school this week. Thank you for returning your children to school looking so smart and happy.

Welcome to the new children who have joined our school family this week.

We have got lots of exciting plans for this term including Viking Days, sports competitions, and lots of interesting trips and activities. Our Spring Term clubs will start on Monday 15th January.

On behalf of the entire staff, thank you again for the Christmas cards and gifts. Your generosity and support is very much appreciated.



#### Shine Folders

Parents/carers are aware that our school vision is 'Let your light shine' (Matthew 5:16).

We are always trying to find new ways for children to discover new talents, build character and shine brightly.

At the end of last term, we introduced our new Shine Folders. Every child in school has been provided with a Shine Folder where they can keep copies of awards and certificates they receive in school.

Many children have already got awards in their shine folders as we are adding copies of Honours and Attendance certificates from last term.

We hope that many children will have lots to add to their Shine Folders this term.

# Message from Headteacher

## **School Shoes**

I am grateful to our families for supporting us in keeping standards of uniform and PE kit so high at our school. It is wonderful to see children looking so smart in their uniforms and wearing appropriate clothing for sports lessons.

Please may I request your continued co-operation with regards to school shoes. On days when children do not have PE lessons or Forest School, school shoes should be worn. Pupils are welcome to change into trainers for playtime and lunchtime but should come in wearing their school shoes.

## **Termly Curriculum Newsletters & Parents' Evening**

Curriculum newsletters informing families about this term's learning topics for all year groups will be available on Monday 8th January.

This information will also be available in the Curriculum section of the school website, [www.hooleceprimary.co.uk/pages/curriculum](http://www.hooleceprimary.co.uk/pages/curriculum).

We hope that details of the topics your children are studying this term will be helpful to parents/carers in supporting learning at home.

Parents' Evenings for this term will take place during week beginning 12th February. Further information will follow in due course.

## **Community Cabin**

Our school Story Shack and Uniform Union have been a great addition and we are very grateful to the volunteers who ensure that they remain tidy and well organised.

We are looking for help to sort out and maintain our Community Cabin. This is the shed near the staff car park which contains pre-loved general clothing and footwear. If you are able to spare an hour or more a week to help with this, please speak to the school office.

## **School Attendance - January Slam Dunk**

Our Attendance & Punctuality Crew (PAC) are leading on a new reward for attendance. Each week, classes with the best attendance will progress through the rounds of the Slam Dunk competition.

At the end of the competition period, the winning class with the highest attendance percentage will enjoy a special treat of their choice.

We will keep you posted on which classes are in the running to win the competition. An attendance and punctuality newsletter will also be sent out later this term.

# Message from Headteacher

## Coffee Morning

I invite you all to join us for a coffee next Wednesday, the 10th January from 8.50am – 10.30am.

The coffee session is open to all and an opportunity for parents/carers and family members to find out more about the work of our school and services in the local community.

During the session, parents/carers and family members will have the opportunity to talk to school staff and to representatives from other agencies including Citizens Advice, Home Energy Advisors, the local Family Learning team, HETTY Nursery & Pre-School, All Saints' Church and the West Cheshire Credit Union.

Staff will be available to talk to families and answer questions about a range of issues including:

- Phonics and early reading;
- Helping your child with Maths;
- Advice about Nursery and pre-school provision, including 15 and 30 funded hours applications;
- Early Years – supporting children with early learning;
- Curriculum & Assessment – how we organise the curriculum in school, how this is delivered and how we assess pupils' progress;
- Promoting a love of reading and keeping children engaged in reading;
- Teaching and learning of Science in school;
- School Social media platforms;
- Behaviour management, developing routines and supporting children at home;
- Attendance and punctuality;
- Special Educational Needs – Identification and support;
- Outdoor learning & our Learning Outside the Classroom Award.

This event is open to all. You do not need to book for this event. All who do attend for all or part of the session will be entered into a prize draw to win a £25 gift voucher.

We will draw two winning tickets at the end of the coffee session to each win a £25 voucher.

I hope that you will be able to join us for a coffee and a chat on Wednesday morning.



HOOLE CE PRIMARY SCHOOL

# Coffee Morning



**DROP IN AND CHAT  
TO US ABOUT OF  
ASPECTS OF SCHOOL  
LIFE, PLUS  
REPRESENTATIVES  
FROM THE  
FOLLOWING  
AGENCIES:**

- CITIZENS ADVICE
- HOME ENERGY ADVISORS
- THE LOCAL FAMILY LEARNING TEAM
- HETTY NURSERY & PRE-SCHOOL
- ALL SAINTS' CHURCH
- WEST CHESHIRE CREDIT UNION
- SCHOOL STAFF

**8.50AM -  
10:30 AM**

**10 JANUARY 2024**

# Message from Headteacher

## Family Suggestion Box

Please feel free to add any suggestions to our suggestion box which is located near the main school office.

The latest suggestion we have received was for children to be permitted to wear their own clothes for school when they have a birthday as a special treat.

We will be consulting children on this suggestion over coming weeks. We plan to hold an election where children will all have a vote on whether they would like us to implement this.

Our vote will be a serious business with election officers appointed to ensure that the election is a fair and democratic one. Children will visit our polling station in school to cast their votes secretly. The outcome from the children's votes will be communicated to families in the newsletter very soon.



## Italian Themed Menu

Join us for our  
*Italian Day*

**THURSDAY 18TH JANUARY**

**Margherita Pizza**

**Skinny Fries**

**Ice Cream Dazzle**

If your child would like to order a school lunch for this event, there's no need to pre-book; just let us know on the day. The usual £2.70 cost applies or free for those children in receipt of Free School Meals and for Reception/ Key Stage 1.

A selection of sandwiches and jacket potatoes will also be available.







# Spring Timetables

Year Group	Class	PE Days	Information	Forest School Days	Information
R	RJ	Wednesday	Wear PE Kit to school.	Thursday's	Wear clothes suitable for both activities. Bring change of footwear.
	RM	Wednesday	Wear PE Kit to school.	Thursday's	Wear clothes suitable for both activities. Bring change of footwear.
1	1H	Tuesday & Thursday	Wear PE Kit to school.	n/a	n/a
	1WS	Tuesday & Thursday	Wear PE Kit to school.	n/a	n/a
2	2EI	Monday & Thursday	Wear PE Kit to school.	Tuesday's	Wear Forest School clothes to school. Bring change of footwear.
	2C	Monday & Thursday	Wear PE Kit to school.	Tuesday's	Wear Forest School clothes to school. Bring change of footwear.
3	3U	Monday & Wednesday	Wear PE Kit to school.	n/a	n/a
	3WK	Monday & Wednesday	Wear PE Kit to school.	n/a	n/a
4	4K	Monday & Thursday	Wear PE Kit to school.	Alternate Tuesday's	Wear Forest School clothes to school. Bring change of footwear. Check <a href="http://www.hoolceprimary.co.uk/events">www.hoolceprimary.co.uk/events</a> for dates
	4SJ	Monday & Thursday	Wear PE Kit to school.	Alternate Tuesday's	Wear Forest School clothes to school. Bring change of footwear. Check <a href="http://www.hoolceprimary.co.uk/events">www.hoolceprimary.co.uk/events</a> for dates
5	5M	Wednesday & Friday	Wear PE Kit to school.	n/a	n/a
	5S	Wednesday & Friday	Wear PE Kit to school.	n/a	n/a
6	6B	Tuesday & Friday	Wear PE Kit to school.	n/a	n/a
	6R	Tuesday & Friday	Wear PE Kit to school.	n/a	n/a

## PE Lessons

Children should come to school in PE kit on the days they have PE lessons. Please see the timetable above.

Thank you for supporting us in ensuring that your child's school uniform, PE kit and school shoes are in line with our school uniform code.

Our PE kit is as follows:

Indoor: plain white t-shirt, black/navy shorts, pumps or trainers, plus school branded jumper/cardigan.

Outdoor: plain tracksuits (navy/royal blue or black), plus school branded jumper/cardigan.

## Forest School

Children should come to school in suitable outdoor clothes on the days they have Forest School sessions. Please see the timetable above. Please note that if your child has PE and Forest School on the same day, they will need to wear clothes to suit both activities.

Suitable outdoor clothes include:

- Long trousers such as leggings, jogging bottoms or waterproof trousers etc.
- School Branded Jumper or Cardigan
- Waterproof coat (not just "showerproof")
- Wellies/Outdoor shoes
- Gloves/hats if the weather is cold

# Clubs

We are delighted that we are once again able to offer a wide variety of after school clubs. We are so fortunate at Hoole to have a range of external partners to work with to offer exciting activities.

The following clubs are due to start week commencing 15th January.

Confirmation of club places have been emailed to families this week and prior to the Christmas break. Please contact the School Office if you have any queries or would like your child to be placed on a waiting list for a club, in case a pupil changes their mind. We do still have a few places on some clubs so please email [admin@hooleprimary.cheshire.sch.uk](mailto:admin@hooleprimary.cheshire.sch.uk) if your child would like to join.

Day	Year Group	Club	When	Places	Notes
Monday	R	Lego and Singing	3.10-4pm	30	Starts 15 <sup>th</sup> January (free – book on School Spider/website)
	R	<b>Full</b> Yoga	3.10-4pm	12	Starts 15 <sup>th</sup> January (free – book on School Spider/website)
	1	<b>Full</b> Indoor Games	3.10-4.10pm	30	Starts 15 <sup>th</sup> January (free – book on School Spider/website)
	4-6	<b>Full</b> Cross-stitch	3.20-4.20pm	15	Starts 15 <sup>th</sup> January (free – book on School Spider/website)
	5-6	Boys Football Skills	3.20-4.20pm	36	Starts 15 <sup>th</sup> January (free – book on School Spider/website)
	5-6	<b>Full</b> Netball (boys and girls)	3.20-4.20pm	21	Starts 15 <sup>th</sup> January (free – book on School Spider/website)
Tuesday	1-2	<b>Full</b> Lego	3.10-4.10pm	15	Starts 16 <sup>th</sup> January (free – book on School Spider/website)
	3-6	Spanish	3.20-4.20pm	12	Starts 16 <sup>th</sup> January Provided by Speak Like a Native. £7.95 per session
	5-6	Zentangle Art	3.20-4.20pm	30	Starts 16 <sup>th</sup> January (free – book on School Spider/website)
Wednesday	1-6	<b>Full</b> Street Dance	3.20-4.20pm	20	Starts 17 <sup>th</sup> January Provided by Victoria Condliffe. 10 sessions, £60
	3-4	Arts & Crafts	3.20-4.20pm	30	Starts 17 <sup>th</sup> January (free – book on School Spider/website)
	3-4	Lego	3.20-4.10pm	20	Starts 17 <sup>th</sup> January (free – book on School Spider/website)
	3-4	Netball (boys and girls)	3.20-4.20pm	21	Starts 17 <sup>th</sup> January (free – book on School Spider/website)
	3-6	Beacons	3.20-4.20pm	30	Starts 17 <sup>th</sup> January Provided by All Saints' Church (free – book on School Spider/website)
	5-6	<b>Full</b> Girls Football Skills	3.20-4.20pm	15	Starts 17 <sup>th</sup> January (free – book on School Spider/website)
Thursday	1-2	Spanish	3.10-4.10pm	12	Starts 18 <sup>th</sup> January Provided by Speak Like a Native. £7.95 per session
	1-6	<b>Full</b> Choir	3.10-4.20pm	n/a	Starts 18 <sup>th</sup> January (fully booked from beginning of academic year)
	3-4	Football	3.20-4.20pm	25	Starts 18 <sup>th</sup> January Provided by PK Sports. 10 sessions, £35
	4-6	Shakespeare (Thursday)	3.20-4.20pm	28	Starts 18 <sup>th</sup> January (free – book on School Spider/website)
	5-6	<b>Full</b> General Sports	3.20-4.20pm	20	Starts 18 <sup>th</sup> January (free – book on School Spider/website)
	5-6	Imaginative Art	3.20-4.20pm	30	Starts 18 <sup>th</sup> January (free – book on School Spider/website)
Friday	4-6	Shakespeare (Fridays)	3.20-4.20pm	28	Starts 19 <sup>th</sup> January (free – book on School Spider/website)
	4-6	<b>Full</b> Dodgeball	3.20-4.20pm	30	Starts 19 <sup>th</sup> January Provided by PK Sports. 8 sessions, £28

# Zoo Trip

We have organised a trip to Chester Zoo for all pupils on Friday 12th January!

There is no cost for families for this trip. We were allocated free tickets by Chester Zoo and school is paying for the coaches to transport children.

All children will leave school to travel to the Zoo following morning registration on Friday 12th January. They will enjoy a day at the zoo with their classmates and then return to school in time for the end of the school day.

Children will need to wear school uniform, a warm coat and bring scarves/gloves as we will enjoy a full day out. A packed lunch and water bottle will be needed.

Packed lunches may be brought from home or ordered and purchased from school and paid for via the School Gateway app as normal. Pupil who are registered for free school meals (Pupil Premium and Universal) will be provided with a packed lunch free of charge.

Please indicate on the survey on School Spider before Tuesday 9th January if you would like to order a school packed lunch for the trip. There is a choice of ham, cheese or tuna sandwiches.

# Birthdays







# PLEASE HELP!!



Please save the following rubbish  
and leave it in the collection box inside the Story Shack:



\* PRINGLES Tubes & Lids \*

\* Cheese Packaging \*



\* Bread Bags (including wraps/teacakes/crumpets etc) \*

\* Broken hard plastic containers/lunchboxes & bottles \*

\* Warburtons Wax packaging \*



*These can't be recycled with your household recycling BUT we can send to TerraCycle who convert them to pellets and turn them into Picnic benches and kids play areas*

**AND**

**For each Kg of waste we send they will give money back to the school!**

**!! WIN WIN !!**

*So please get saving as much as you can and bring to school where everything will be sorted and sent*

# measles

## Don't let your child catch it

– get them vaccinated with the MMR vaccine

- measles outbreaks happen when not enough children have been vaccinated
- measles can be a very serious disease, leading to ear and chest infections, fits, diarrhoea, and damage to the brain. Measles can kill
- your child is at risk of measles if he or she hasn't had the MMR vaccination
- 2 doses of MMR vaccine are needed to get the best protection
- if your child is due to have had 2 doses of MMR but has not yet received them, no matter what age they are, you should contact your GP to get them vaccinated as soon as possible\*
- if you can't remember if your child has had any, 1 or 2 doses of MMR vaccine, check his or her personal child health record (the Red Book). If this doesn't help, speak to your GP
- if you don't know how many doses your child has had, it's better to have 2 doses of MMR vaccine now rather than risk leaving them unprotected

\*In response to a local outbreak then the 2 doses can be given one month apart from the age of 18 months.

# Key Dates

8-11th January	Team 6B Bikeability Courses (Selected Pupils)
9th January	Passion For Learning Club resumes
12th January	Whole School Chester Zoo Trip
15-18th January	Team 6R Bikeability Courses (Selected Pupils)
15th January	EYFS Lego & Singing Club Starts
15th January	EYFS Yoga Club Starts
15th January	Year 5-6 Netball Club Starts
15th January	Year 1 Indoor Games Club Starts
15th January	Year 4-6 Cross-stitch Club Starts
15th January	Year 5-6 Boys Football Club Starts
16th January	Year 5-6 Zentangle Club Starts
16th January	Year 1-2 Lego Club Starts
16th January	Year 3-6 Spanish Club Starts
17th January	Year 5-6 Girls Football Club Starts
17th January	Year 1-6 Streetdance Club Starts
17th January	Year 3-4 Arts & Crafts Club Starts
17th January	Year 3-4 Lego Club Starts
17th January	Year 3-4 Netball Club Starts

# Key Dates

17th January	Year 3-6 Beacons Club Starts
18th January	Year 4-6 Thursday Shakespeare Club Starts
18th January	Year 1-2 Spanish Club Starts
18th January	Year 1-6 Choir Club Starts
18th January	Year 3-4 Football Club Starts
18th January	Year 5-6 General Sports Club Starts
18th January	Year 5-6 Imaginative Art Club Starts
18th January	Italian Themed Menu
19th January	Year 4-6 Dodgeball Club Starts
19th January	Year 4-6 Friday Shakespeare Club Starts
30-31st January	Year 5 Viking Days
5-9th February	Children's Mental Health Week
12-15th February	Parents' Evenings (dates/times tbc)
16th February	INSET Day (school closed to pupils)
19-25th February	Half-term Holidays
26th February	School re-opens
11-15th March	Science Week
29th March	Good Friday (school closed)





**samba**  
S K I L L S

# 6 WEEK SKILL STARTER

STARTS

**8TH  
JAN**

**Boys & Girls**  
School Years 2, 3 & 4

**5:45 - 6:45 PM**

**County Offices, Chester**  
Mannings Lane, CH2 4EU

6 Sessions **£54**

**DM to Register**

[www.sambaskills.co.uk](http://www.sambaskills.co.uk)

Website [www.sambaskills.co.uk](http://www.sambaskills.co.uk) or visit our socials to see more